

# BEVERLEY ECO FAIR

2023



Beverley  
Minster 



*"The greatest threat to our planet is the belief that someone else will save it for us."*

Robert Swan

## **A message from the chair of the Beverley Minster Eco Group**

Welcome to the first Beverley Eco Fair in the historic Minster. The Fair takes place under 'Gaia', the impressive and moving representation of the planet Earth created by the artist Luke Jerram. Thousands have viewed 'Gaia' over the past three weeks and have been overwhelmed by a sense of awe and wonder. Such beauty and so fragile looking! And it is home. We want it to continue to be home. Back in 1990 Margaret Thatcher said: 'We have a full repairing lease on the earth. We have the surveyor's report and it shows that there are faults and that repair work needs to start without delay.'

What can we do? We are very grateful to our stallholders, exhibitors, speakers, those organising workshops and to our sponsors for enabling the Fair to take place. They help answer that question. They bring a message of hope for the future, not despair.

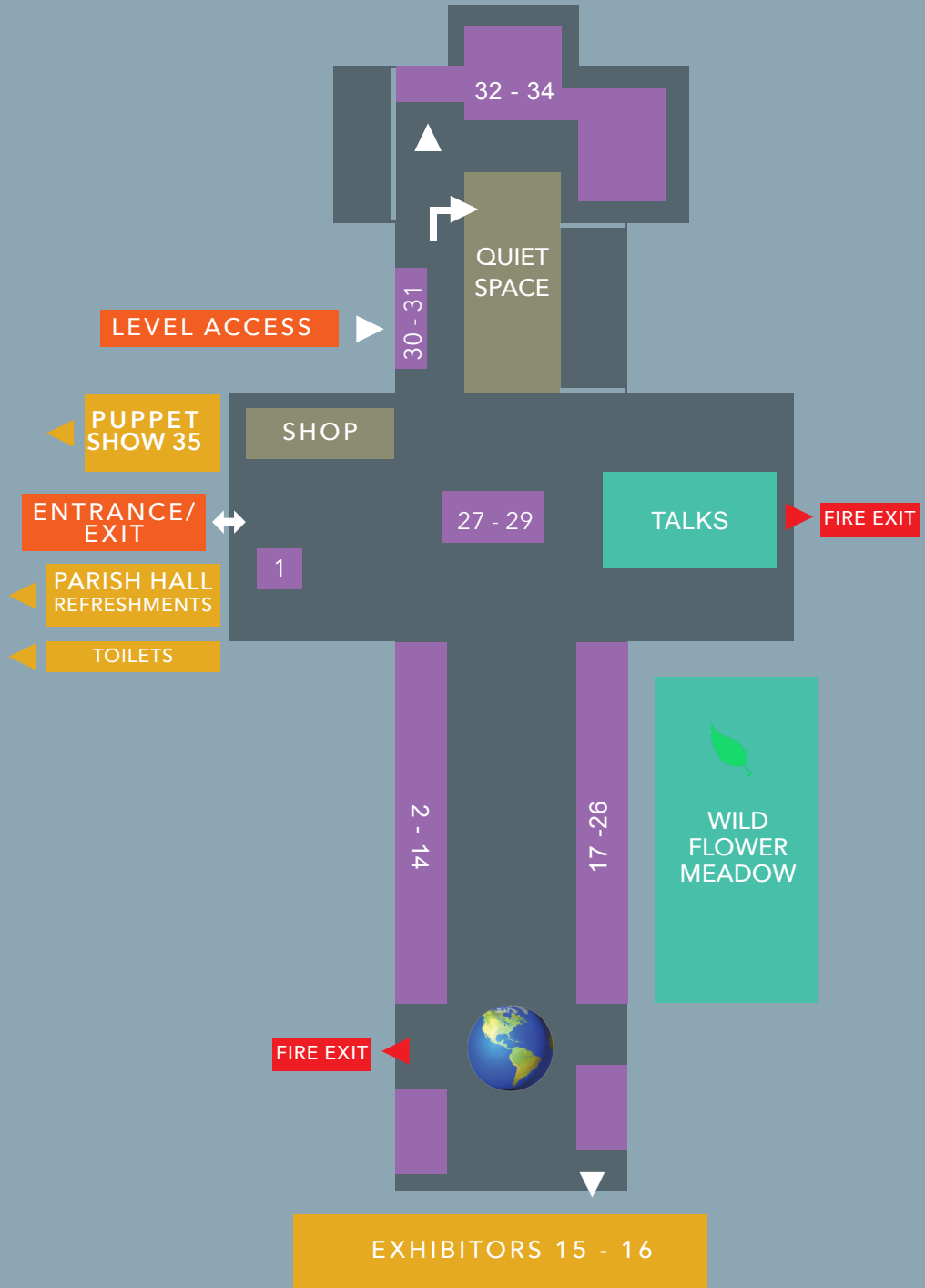
Before we leave the Eco Fair we can choose one thing we will do to reduce our carbon footprint. We can become a Climate Hero, either today at the Minster or back at home (go to [climatehero.me](http://climatehero.me)).

Today is turnaround time.

*David James*



# FLOOR PLAN



## ECO FAIR SPONSORS



"This event is part-funded by East Riding of Yorkshire Council's 'Do It For East Yorkshire Community' Fund"

If you would like further information about the grant please visit [www.doitforeastyorkshire.co.uk/#community-grant](http://www.doitforeastyorkshire.co.uk/#community-grant)



THE LITTLE  
COACH HOUSE

Email: [admin@littlecoachhouse.co.uk](mailto:admin@littlecoachhouse.co.uk)

Website: [www.littlecoachhouse.co.uk](http://www.littlecoachhouse.co.uk)

Facebook: [@thelittlecoachhouse](https://www.facebook.com/thelittlecoachhouse)

Instagram: [@thelittlecoachhouse](https://www.instagram.com/thelittlecoachhouse)

The Little Coach House is supporting Ecofair, as owners Jane and Alan are active members of the @9.15 café church at Beverley Minster. We want to do our bit in looking after God's world, and produce sustainable learning resources as an alternative to plastic.

## DOGGER BANK WIND FARM

Dogger Bank Wind Farm is an offshore wind farm being developed in three phases - Dogger Bank A, B and C - located between 130km and 190km from the North East coast of England at their nearest points. Collectively they will become the world's largest offshore wind farm.



# STALL HOLDERS

## 1 Reception desk

3

### **Eco starts at home**

Local Charity Shops help declutter, offer affordable prices, give volunteer satisfaction, reduce landfill and raise funds for worthy causes.

Win Win. Come and test your Eco.

5

### **Mires Beck Nursery**

Tel :01430 421543

[www.miresbeck.co.uk](http://www.miresbeck.co.uk)

A commercial nursery and day service provider for adults with learning disabilities and Autism. We produce cell grown trees and wildflowers for Yorkshire, and perennial plants for visitors and trade.

6

### **East Yorkshire Federation of Women's Institutes**

Tel: 01482 860626

e-mail [eyfwi@eastyorkshirewi.org.uk](mailto:eyfwi@eastyorkshirewi.org.uk)

Facebook [www.facebook.com/EYFWI](http://www.facebook.com/EYFWI)

The WI: Inspiring women to take action to protect the environment, tackle climate change and campaign on the issues that matter to them and their communities.

7

### **Frith Farm Ltd**

Hull Bridge Road Beverley East Riding of Yorkshire HU17 9RS

M: 07428919119 / 07450241156

W: [frithfarming.com](http://frithfarming.com)

Frith is a local farm based within walking distance from the centre of Beverley, and provides food grown locally for the local community. Frith is passionate about improving the way in which food is produced and distributed.

8

### **Beverley Fairtrade Group**

Contact: John Turner [jetbev2@gmail.com](mailto:jetbev2@gmail.com)

Beverley has been a Fairtrade town since 2007. We promote fair trade in local schools and community groups and stock a wide range of products to sell which will be on display today.



# STALL HOLDERS

**9**

## **Holderness Hedgehog Hospital**

Emergency telephone 07563917914

[www.holdernesshedgehoghospital.org](http://www.holdernesshedgehoghospital.org)

Email: [hedgehoghospitalvolunteers@gmail.com](mailto:hedgehoghospitalvolunteers@gmail.com)

Facebook: [@holdernesshedgehoghospital](https://www.facebook.com/holdernesshedgehoghospital)

Twitter: [@hoghospital](https://twitter.com/hoghospital)

HHH covers Hull and the East Riding of Yorkshire. Our aim is to rescue, rehabilitate and release hedgehogs back to the wild.

**10**

## **Side Oven Bakery**

Email: [bakery@sideoven.com](mailto:bakery@sideoven.com)

01262 488376

Website: [www.sideoven.com](http://www.sideoven.com)

Side Oven Bakery is based on our organic family farm in East Yorkshire. The bakery uses produce grown on the farm within its award winning product range. Products are handmade using traditional methods.

**11**

## **Greens the Signmakers**

Website: <http://www.greens-signmakers.co.uk/>

Personal Linked in: <https://www.linkedin.com/in/lawrence-green-3b985710/>

Email: [green@greens-signmakers.co.uk](mailto:green@greens-signmakers.co.uk)

Phone: 01482 327371

Greens the signmakers has been established for 60 years and is enjoying driving sustainability forward in the industry. We provide full internal and external signage throughout all of the UK.

**12**

## **Pure Renewables**

iPark 14D Innovation Drive, Hull, HU5 1SG 0148 846005

[Sales@Purerenewables.co.uk](mailto:Sales@Purerenewables.co.uk)

A pioneering team of renewable heating professionals providing commercial & domestic renewable energy solutions Nationwide. Our multi-product solutions include sophisticated design & range from air, water & ground source heat pumps, solar, MVHR & under-floor heating.



# STALL HOLDERS

**13**

## **The Little Coach House**

Email: [admin@littlecoachhouse.co.uk](mailto:admin@littlecoachhouse.co.uk)

Website: [www.littlecoachhouse.co.uk](http://www.littlecoachhouse.co.uk)

Facebook: @thelittlecoachhouse

Instagram: @thelittlecoachhouse

The Little Coach House is a family business who produce beautiful solid beech early learning resources and eco-flashcards, designed by Educators to support learning and well-being in the Early Years.

**14**

## **Yorkshire Wildlife Trust with #TeamWilder Molescroft Wildlife Network**

<https://www.ywt.org.uk/>

Yorkshire Wildlife Trust cares for wildlife and wild places across Yorkshire, and through #TeamWilder inspires and empowers communities to act locally for nature in their neighbourhoods. Molescroft Wildlife Network will be at the stall to share how being a part of #TeamWilder has helped them create a wilder Molescroft.

**15**

## **EV and Hybrid Cars**

Speak to the owners and find out the positives and negatives of Eco friendly cars.

**16**

## **RSPB (Royal Society for the Protection of Birds)**

Website <https://www.rspb.org.uk/>

Facebook: rspb

Instagram: @rspb

The RSPB was established in 1889, it is a leading UK charity devoted to conserving nature and its diverse habitats.

**17**

## **TCR Building Solutions Limited**

[www.tiledconservatoryroofs.co.uk](http://www.tiledconservatoryroofs.co.uk)

We design and build beautiful, bespoke, tiled, insulated conservatory roofs which offer:

Improved thermal efficiency, Enhanced energy efficiency, Better sound insulation, Increased privacy, Reduced maintenance.



# STALL HOLDERS

**18**

## **Beverley Minster Volunteer Gardeners**

Contact Judy Smith via Beverley Minster Website

<https://beverleyminster.org.uk/about-us/contact-us/>

We are a group of volunteers (mainly retirees) who develop and maintain the Minster's gardens and help provide the Minster's flowers. Come and see our stall to find out more.

**20**

## **Renewable Heat Partnership**

Tel: 0333 3441430

Email address: [info@renewableheatpartnership.co.uk](mailto:info@renewableheatpartnership.co.uk)

Website: [www.renewableheatpartnership.co.uk](http://www.renewableheatpartnership.co.uk)

The Renewable Heat Partnership LTD offers nationwide expert advice on heating and micro-generation, delivering efficient and low-carbon solutions like heat pumps, solar panels, batteries and insulation, while assisting customers with energy-saving government grants.

**21**

## **East Riding of Yorkshire Council Waste and Recycling Team**

[wastewatchers@eastriding.gov.uk](mailto:wastewatchers@eastriding.gov.uk)

The team promotes the council's waste and recycling services and is available to help residents with any questions on waste matters - including about bins, Household Waste Recycling Sites and reuse.

**22**

## **The Wombles of Beverley** (and surrounding villages)

Email: [info@thewomblesofbeverley.co.uk](mailto:info@thewomblesofbeverley.co.uk)

The Wombles of Beverley are a Constituted Community Group of volunteers who pick litter and operate within Beverley and its surrounding villages. Our members include people of all ages, including children.

**23**

## **Green Christian**

Contact: [info@greenchristian.org.uk](mailto:info@greenchristian.org.uk)

Green Christian is a group of ordinary Christians from all backgrounds and traditions. Inspired by our faith, we care for Creation through prayer, living simply, public witness, campaigning and mutual encouragement.





# STALL HOLDERS

**24**

## **UrbnSolar**

<https://www.instagram.com/urbnsolar/>

01482 230123

We are a solar panel installation company with a Beverley based showroom. Making green energy easy.

**25**

## **HDM Solar**

<https://www.hdmsolar.co.uk/>

Facebook: HDM Solar

Instagram: @hdm\_solar

LinkedIn: hdm-solar-ltd

HDM Solar is a family run supplier of renewable energy products, supplying to the public and trade customers. We operate nationally with our HQ based in Hull.

**26**

## **Hull Friends of the Earth**

[Hull Friends of the Earth | Facebook](#)

[FoEHull \(@FoEHull\) / Twitter](#)

[Hull Friends of the Earth \(@hullfriendsoftheearth\) • Instagram photos and videos](#)

[www.hfoe.org.uk](http://www.hfoe.org.uk)

Hull Friends of the Earth are a grassroots environmental campaigning organisation. Key campaigns range from protecting nature, to campaigning for a fossil free future. We welcome all.

**27**

## **Power for People**

Email: [info@powerforpeople.org.uk](mailto:info@powerforpeople.org.uk)

Power for People is a not-for-profit organisation, campaigning for the UK to rapidly transition to 100% clean energy and for this to benefit local communities.

**28**

## **Climate hero and Beverley Minster Eco Church Group**

<https://beverleyminster.org.uk/eco-living/>

Web: <https://climatehero.me>

Take the Climate Hero test to determine your carbon footprint and find out about Beverley Minster's Eco Church and what we are doing to try and live more sustainably.



# STALL HOLDERS

**29**

## **Carbon footprint Tree**

Choose an action and commit to reduce your carbon footprint. Write this on a paper footprint and hang it on our tree. Reducing our CO2 emissions to help our beautiful Gaia.

**30**

## **ERYC Countryside Access Team**

Tel: 07967 630527

Web: [www.eastriding.gov.uk](http://www.eastriding.gov.uk)

Twitter: [www.twitter.com/East\\_Riding](https://www.twitter.com/East_Riding)

Facebook: [www.facebook.com/eastridingcouncil](https://www.facebook.com/eastridingcouncil)

The Countryside Access Team is responsible for the management of many Local Nature Reserves within the East Riding as well as the county's network of footpath and bridleways. The team work to conserve and enhance the area's wildlife and to provide safe, well maintained green spaces for recreational use.

**31**

## **East Yorkshire and Derwent Ramblers**

We are a charity dedicated to removing barriers so everyone can enjoy walking in green spaces, helping people to boost their wellbeing naturally. We organise led walks, new walkers welcome.

<https://www.eastyorkshireramblers.org.uk/walks/all-walks.html>  
or Joe Neal, Beverley Group Secretary on 07972 410289



## WORKSHOPS/DEMONSTRATIONS/CHILDREN'S ACTIVITIES

**2**

**Beverley Repair Café:** Repair Session from 10.00 -11.30

Bernie Phillips: Beverley Repair Café

Email [beverleyrepaircafe@gmail.com](mailto:beverleyrepaircafe@gmail.com)

Also on Facebook, Instagram and X (formerly Twitter)

Beverley Repair Café is a community group run by volunteers who offer their skills and expertise to fix broken but loved/useful items, to reduce the amount going to landfill.

We mend electrical, mechanical and wooden items as well as clothing/fabrics.

**4**

**Recycle a cycle**

Mike's Bikes (just a hobby) - Michael Blake

See how bicycles are renovated and either given to charities or needy homes or sold and the proceeds go to Hull for Heroes or St Albans Church Hull for the needy and to replenish parts.

**14**

**Seed Ball Making**

Jo Rawson, Community Engagement Manager, Yorkshire Wildlife Trust.

Sowing wildflower seeds in your garden, yard or window box is a perfect way to help pollinators. Make some seed balls with Yorkshire Wildlife Trust to take home and bounce some colour into your outdoor space.

**16**

**Apple Bird Feeder Fun: Create a Treat for Feathered Friends!**

RSPB - officer

Discover the fun of making a bird-friendly apple feeder! Perfect for kids, it's a creative and engaging activity to attract birds to your garden.

**19**

**Join Dr Dave and friends** for simple and fun environmentally themed science experiments that explore the wonder of the world and the 'wonder of the world maker' including phone microscopes, rainbow makers and crazy pendulums!

Revd Dr Dave Gregory

Organisation: BUEN - Baptist Union Environment Network

**32**

**Eco bird feeders**

Cathy and Anna from ACT Heritage Engagement

Come along and make your own bird feeder using recycled materials. Take it home and watch the birds come to feed in your garden!

## WORKSHOPS/DEMONSTRATIONS/CHILDREN'S ACTIVITIES

**33**

### **CO2 and the Environment**

Engage in dry ice experiments and grasp the significance of CO2 emission reduction for Earth's protection. Our educational activities aim to enlighten children about carbon dioxide, its role in climate change, and the renewable energy sector's efforts to combat this problem.

Name of Organisation: RWE & Lab Rascals

**34**

### **Our local natural environment - what do you love about it?**

An art workshop for all ages.

Delivered by a local artist in partnership with East Riding of Yorkshire Council and East Riding Voluntary Action Services (ERVAS) Ltd

We welcome you to take part in a creative art activity expressing your thoughts, feelings and emotions about our local environment. Fun for all ages, this workshop will be led by a local artist specialising in the natural world.

James Taylor, Sustainable Development Team, East Riding of Yorkshire Council says "I am very excited to help run this artistic workshop event celebrating the beautiful and unique natural environment we have in East Yorkshire".

**35**

**Seedheart** - a small puppet show about **big** things for all ages. Duration 40 minutes Presented by Indigo Moon Theatre and performed by Anna Ingleby.

The important tale of what happened to the Earth when humans came along and how we can restore our green planet. Watch as our story unfolds (literally) from a single suitcase and follow Grey's journey to a better future with magical pop-ups, puppetry and shadows.

Indigo Moon Theatre was created in 1999 by founder Anna Ingleby to showcase the magical world of shadow and puppet theatre



# EVENTS PROGRAMME

## All day events (see location on plan - page 3)

Title	Location
Recycle a cycle	4
YWT Seed ball making	14
RSPB Apple bird feeder fun	16
Dr Dave's Experiments	19
Climate Hero	28
Carbon Footprint Tree	29
Eco bird feeders	32
CO2 and the environment (dry ice experiments)	33
Refreshments	Parish Hall

---

## Timed events (see location on plan - page 3)

	Time	Title	Presenter
	10.00	Beverley Repair Cafe - stall 2 (until 11.30)	Bernie Phillips
<b>TALK</b>	10.30	Eco-friendly houses	Dr Graham Parr
		Learn about recent experiences when building a new traditional house which aims to be as efficient as possible. Materials used, design approach and local materials will all be described using lots of photos and real life data. Hear direct from the owner!	
	11.00	Seedheart Puppet Show	Indigo Puppet Theatre
<b>TALK</b>	11.00	Sharing our sustainable journey in business	Lawrence Green
		Inspired by my daughter's poem, we will share with you the steps we have taken to make genuine environmental improvements across the whole of our business. From how we are powered, travel, stock and manufacture, all reducing our carbon emissions.	
<b>TALK</b>	11.30	Embracing new technology in your home	Chris Whitelock
		Taking the Hot Air out of Heat Pumps - come along to hear about the benefits of renewable technologies and how they can best integrate into your homes and businesses.	

# EVENTS PROGRAMME

**TALK** 12.30 Community energy revolution campaign Rupert Meadows

Power for People campaigns to help the UK accelerate its transition to renewable energy and to ensure that this transition benefits local people. Their current campaign to enable growth in community-led renewable energy projects has led to recent government action.

13.00 Seedheart Puppet Show Indigo Puppet Theatre

**TALK** 13.00 The Church and the climate crisis  
- how can we be part of the solution? Revd Johannes Nobel

The churches and schools of the Diocese of York are responsible for emitting 10,000 tonnes of CO<sub>2</sub>e annually. What would it take to reduce these emissions by the same amount, or more? Let's consider the role of faith and influence.

**TALK** 13.30 Journeying into active hope during  
the climate crisis Catherine Fish

Human-caused climate change, ecological degradation, biodiversity loss, and related threats to human life inevitably elicit a complicated emotional response. How do we acknowledge, and process our feelings, and become able to journey into active hope?

**TALK** 14.00 What3words: where are we  
with climate change? Revd Dr Dave Gregory

Words matter. They are our direction in life. Come and explore words expressing wonder at the world around us. Our scientific insights into our planet's climate. And words of fear and hope for the future of our world as climate changes.

**TALK** 14.30 Catch the wave!  
Go healthy in the era of climate change Pedro Beltran-Alvarez

The wave of climate change is coming at you, and it's a big one. What are you and your family going to do? Can you make the wave smaller? Can you catch it and enjoy the ride?

15.00 Seedheart Puppet Show Indigo Puppet Theatre

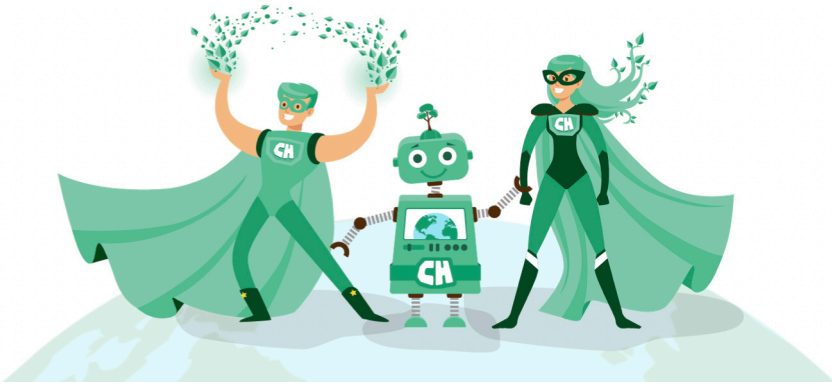
**TALK** 15.00 Taking action for wildlife with #TeamWilder Jo Rawson

Discover how Yorkshire Wildlife Trust are empowering people to make a real and lasting difference for nature in their neighbourhoods, explore how communities across East Yorkshire are taking action for wildlife and find out how #TeamWilder can help you.

**TALK** 15.30 What is permaculture? Lausanne Tranter

Come and find out about permaculture - an innovative framework for a sustainable way of living. Learn about the ethics and principles of permaculture. It's not all about gardening!

# Be a Climate Hero



Thank you for coming to Beverley Eco Fair 23. As a result of your visit today we would be grateful if you would complete the Climate Hero Carbon Calculator to determine your climate impact and consider committing to one change in lifestyle to help the planet.

This can be done by scanning the QR code



## THANK YOU FOR VISITING OUR ECO FAIR



If you would like to leave a comment, please scan the QR code to visit Beverley Minster's Tripadvisor page.

